



AIR MINI SERIES

704

F O A M I N I

FOAM SPRAYER

**Surface Cleaning / HVAC Cleaning
Disinfecting & Sanitizing / Car Washing & Detailing**

NON-FLAMMABLE ONLY

Instruction Manual

INDEX

Index 1

Specifications 2

Unpacking 3

Important Product Note 4

General Warnings 5 - 6

Charging 7 - 8

Operation 9 - 10

Maintenance Cont’d 11

Protection 12

Replacement Parts SKU numbers 13

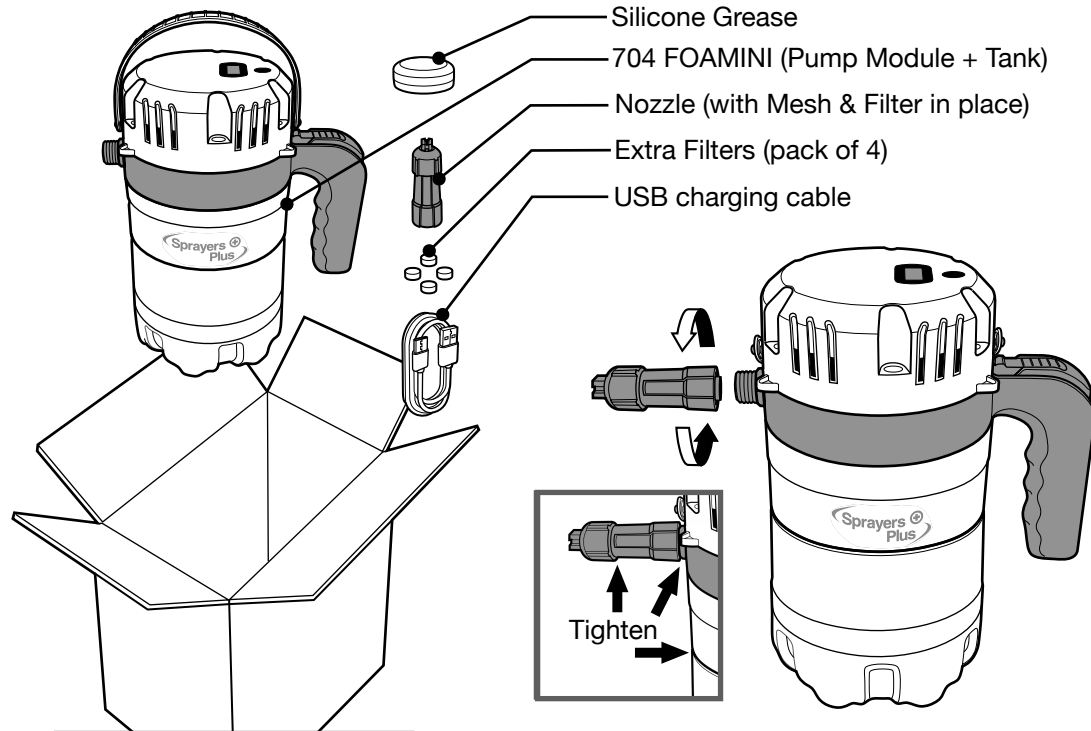
Return Instructions 14

Warranty Info 15

704 FOAMINI SPECIFICATIONS

Target Market	General Usage To Spray (Foaming): <ul style="list-style-type: none">• Detergent• Cleaning Solution For Surface Cleaning / Disinfecting & Sanitizing / HVAC Cleaning & Car Washing & Detailing. Warning: Spraying any chemical other than the above may damage the product and can pose a hazard to the user. Contact us at info@sprayers-plus.com if you have any questions.
Power (Battery Type)	Rechargeable 7.2V Lithium Battery (Internal)
Charging	Through USB-C Charging Port <i>Note: USB charger is not included</i>
	Charging Time: 2.5 Hours
	Battery Cycle: 500 Times
Tank Capacity - US Gallons (Litres)	1/3 Gal (1.2L)
Spraying Performance Per Single Charge	Approximately 10 Tanks, covers up to 1000 SQ FT (approximately 6 stand-sized vehicles)
Dry Weight - lbs (kg)	2.57 lb (1.17kg)
Seals & O-rings	Nitrile
Preset Optimal Pressure	32.0 ± 1.5 PSI (2.21 ± 0.10 BAR)
Pump Type	Battery Powered Compression Pump
Warranty	1 Year (For General Residential Usage)

UNPACKING AND ASSEMBLY



IMPORTANT!

Before using the product, read the rest of this manual and follow the instructions carefully.

ASSEMBLY: screw the Nozzle to the Pump Module, tighten all the seals gently.

CAUTION: If any of the seal(s) is/are not tightened properly, air (and fluid) may leak out through those locations, the pump would not stop automatically after reaching the designated pressure setting.

Further tightening of those parts can stop such leakage.

IMPORTANT PRODUCT NOTE

SprayersPlus produces top quality products meeting the highest standards in the market.

To ensure your safety, optimize the user experience and maximize the life span of this product, it is of utmost importance to follow the product instructions, as well as the DOs and DON'Ts outlined in the operation and maintenance procedures of this manual.

704 FOAMINI is engineered to spray Detergent and Cleaning Solutions. Spraying any chemical other than these may damage the product and can pose a hazardous to the user.

If you have any question about chemical compatibility, contact us at info@sprayers-plus.com

Please read this manual thoroughly and follow carefully.

SAFETY GUIDELINES - DEFINITIONS

It is important for you to read and understand this manual.

The information contains relates to protecting YOUR SAFETY and PREVENTING PROBLEMS.

The symbols below are used to help you recognize this information.

WARNING!

Indicates a potentially hazardous situation which, if not avoided, could result in death or serious injury.

CAUTION!

Indicates a potentially hazardous situation which, if not avoided, may result in minor or moderate injury.

Contact us if you have any question or concern:

info@sprayers-plus.com

GENERAL WARNINGS

WARNING!

IMPROPER USE OR FAILURE TO FOLLOW INSTRUCTIONS CAN RESULT IN EXPLOSION OR LEAKAGE CAUSING SERIOUS EYE OR OTHER INJURIES.

FOR THE SAFE USE OF THIS SPRAYER, YOU MUST READ AND FOLLOW ALL INSTRUCTIONS.

- **DO NOT SPRAY UPSIDE DOWN.**
- **DO NOT SPLASH or IMMERSE THE PUMP MODULE in WATER or OTHER LIQUIDS.**
- **DO NOT OPERATE THE PRODUCT WHEN IT IS RAINING or SNOWING.**
Such actions may cause premature failure of the electronics and the cell.
- **Flammable, caustic, acidic or other corrosive solutions must not be used unless you are using the appropriate type of tank, seals and accessories with the specifications designated to handle the specific chemical.** Always read and follow manufacturer's instructions before using this sprayer because some chemicals may be incompatible and hazardous when used with this sprayer.
- Do not attempt to modify this sprayer. Replace parts only with manufacturer's original parts.
- Do not leave a pressurized sprayer in the hot sun. Heat can cause pressure to build up, resulting in possible explosion.
- Do not store or leave solution in the tank after use. Always wear goggles, gloves, long sleeve shirt, long pants and full foot protection while spraying.
- Wash your hands thoroughly after handling chemicals and after using the sprayer.

CAUTION!

- **PRE-USE CHECK:** Before each use, check the tightness of all the connections.
- Do not exceed a tank solution temperature of 86°F/30°C.

NOTE: you may find a very small amount of residual water in the tank of a brand new unit, this is from the quality and performance testing in the factory. This is normal.

GENERAL WARNINGS CONT'D AND BATTERY WARNINGS

⚠ WARNING - GENERAL

Operation Temperature: DO NOT store or use the tool and battery pack in locations where the temperature may reach or exceed 105°F (40°C) (such as outdoor sheds or metal buildings in the summer season).

Explosive Atmospheres: Do not charge or use the product in explosive atmospheres, such as in the presence of flammable liquids, gases or dust.

⚠ WARNING - BATTERY

SprayerPlus sprayers are designed to operate with a built-in lithium-ion battery.

The battery does not come fully charged out of the box. Before operating, Read the safety instructions and follow the charging procedures outlined on the following pages.

BATTERY
Li-ion, rechargeable

WARNING

Damaging the battery pack or it's connections can lead to fire or burns

Do not attempt to access the battery pack (which is concealed inside the pump module) for any reason.



IMPORTANT SAFETY INSTRUCTIONS

Battery Contents Leak:

The battery electrolyte for lithium-ion batteries is composed of a mixture of liquid organic carbonates and lithium salts. Do not incinerate the battery. The battery can explode if exposed to flames or high heat. Toxic fumes and materials are created when battery packs are burned.

- **Burn hazard.** Battery liquid may be flammable if exposed to sparks or flames.
- **Contents of opened battery cells** may cause respiratory irritation. If respiratory irritation is experienced due to exposure, move person to a well-ventilated area immediately. If symptoms persist, seek medical attention.
- **If battery contents come into contact with skin,** immediately wash area with mild soap and water.
- **If battery liquid gets into the eye,** rinse water over the open eye for 15 minutes or until irritation ceases. If medical attention is needed, see a doctor immediately.

CHARGING

IMPORTANT CHARGING NOTES

To recharge the product, follow the Charging Procedure in this manual.

Always charge the battery after use to maximize the life of the battery. Leaving a drained lithium ion battery in storage for too long may cause it to fail to recharge.

The product should be recharged whenever it fails to produce sufficient power on jobs that were previously easy to complete. DO NOT CONTINUE to use under such condition.

Charging Temperature: DO NOT charge the product in an environment where the air temperature is below 40°F (+4.5°C), or above +105°F (+40.5°C). Follow these guidelines to prevent serious damage to the battery.

To get a longer life and better performance of the battery, charge the product in an environment where the air temperature is between 65°F and 75°F (18°C to 24°C).

The battery/pump module may become warm while charging. This is normal and does not indicate a problem.

To facilitate the cooling of the product after use, avoid placing it in a warm environment such as in a metal shed or an uninsulated trailer.

⚠ WARNING - SHOCK HAZARD

Do not allow any liquid to get inside the pump module. Never attempt to open it to access the battery. If the plastic housing breaks or cracks, return it to a service centre for recycling.

Foreign materials of a conductive nature, such as steel wool, aluminum foil, buildup metallic particles, etc., should be kept away from the charging port and connectors of the USB cable.

⚠ WARNING - TRANSPORT

Airplane luggage: The US Department of Transportation's Hazardous Material Regulations (HMR) prohibits the transport of lithium-ion batteries in commerce or on airplanes (i.e., packed in suitcases and carry-on luggage) UNLESS they have proper short-circuit protection.

NOTE: Product with lithium-ion batteries should NOT be put in checked baggage.

Regulations of other countries may be different. Please check with your airline.

STORAGE RECOMMENDATIONS

Store product in cool and dry places; keep it away from direct sunlight and excess heat or extreme low temperature.

Note: Storage up to 3 months will not harm a fully charged battery.

CHARGING CONT'D

CHARGING PROCEDURE

1. Ensure the environment is free of flammable liquids, gases or dust.
2. Gently pull out the plastic cover from the charging port.
3. Insert the USB-C side of the charging cable to the charging port.
4. Plug the other side of the charging cable to an appropriate power source, charging begins and stops automatically.

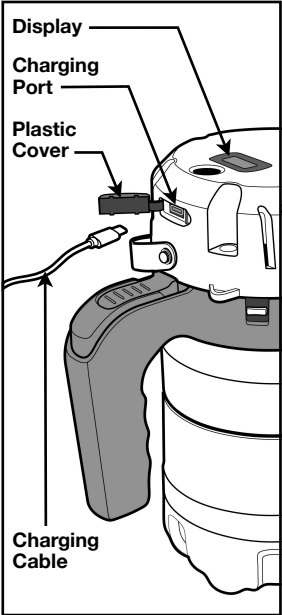
Charging-in-progress indication: the display lights up continuously (showing 0.0.0 PSI BAR) and the charged segment of the battery indicator starts flashing.

The segment will increase until fully charged.

Fully Charged indication: all 4 segments of the battery indicator light up, then it starts flashing together with 0.0.0 PSI BAR until the charging cable is disconnected.

Charger: typical USB chargers for cell phone can be used to perform regular charging of the 704 FOAMINI. For rapid charging, use chargers that indicate 5V@2A/3A/4A output.

Charging time: from “Low Battery Warning” appears to fully charged is about 2.5 to 3 hours under regular charging.



If the product does not charge properly, try the followings:

- (1) Check current at the outlet or receptacle by plugging in a lamp or other appliance.
- (2) Check to see if outlet or receptacle is having a power switch which is being turned off.
- (3) Use another cable to charge.
- (4) Bring the product to another location to charge, where the surrounding air temperature is between approximately 65°F and 75°F (18°C and 24°C)

If charging problems persist, take the product to your local service center.

OPERATION

PREPARATION & PRESSURIZING

704 FOAMINI automatically pressurizes the tank to provide continuous reliable air pressure for spraying and is preset at the factory for optimal pressure.

PREPARATION

1. Make sure the unit is charged.
2. Make sure the unit is the appropriate type to spray the designated liquid.
3. If the tank is attached to the pump module, press the (red) Pressure Relief Lever to depressurize the tank.
4. Unscrew the tank and fill it with the designated liquid (up to the maximum level line).
5. Screw the tank back to the pump module, make sure it is tightened.

PRESSURIZING

1. Press and hold the ON/OFF Switch (for a few seconds): the display lights up showing battery level and current pressure in the tank. "Push-to-start reminder" flashing.
2. Press the ON/OFF Switch one more time (without holding) to activate the pump: "Push-to-start reminder" goes off; the display shows increasing pressure reading in the tank.
3. The pump stops (and the display stops flashing) when 27.9 PSI or 1.92 BAR is reached. The unit is ready to spray - you may start by pressing the release trigger.

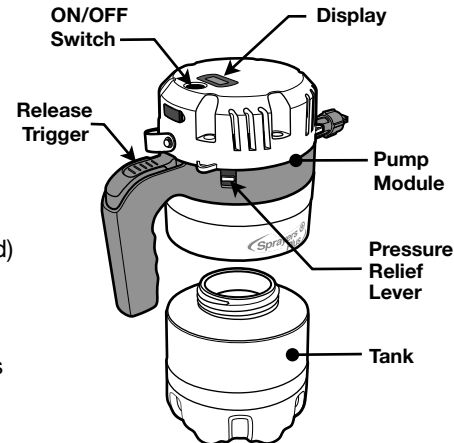


Switching between PSI and BAR: after the display is awoken, quickly press the ON/OFF Switch twice.

Once the pressure in the tank drops below the pre-set minimum pressure threshold, the pump will automatically restart again until the designated pressure is reached.

You may stop the pressurizing process anytime by pressing the ON/OFF Switch, and you can resume pressurizing by pressing the ON/OFF Switch again.

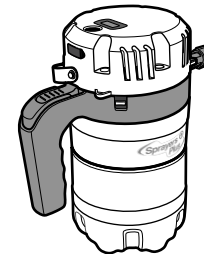
To turn off the unit: press-and-hold the ON/OFF Switch (for a few seconds).



OPERATION

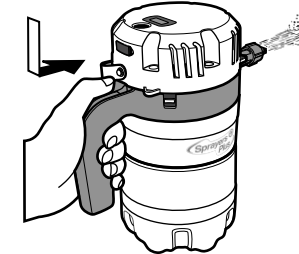
SPRAYING & MAINTENANCE

The unit is ready to spray with it's best performance when the pressure in the tank reaches the preset optimal pressure.



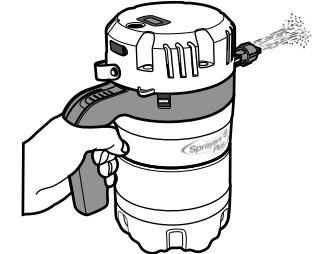
Simply press the release trigger to start spraying.

For **continuous spraying**, press the release trigger and push forward the **Spraying Lock Slider** on the trigger.



Once the Spraying Lock is engaged, the unit will keep spraying without the need of pressing the trigger.

To **disengage**, simply pull the slider backwards.



MAINTENANCE

Cleaning of the unit is recommended every time after finishing the spraying operation:

1. Turn off the unit and depressurize the tank.
2. Unscrew the Tank from the Pump Module, dispose of the residue in the tank.
3. Fill the Tank with clean water, screw it back to the Pump Module, turn on the product and spray towards somewhere appropriate (such as your driveway or inside a shower stall) - run at least one tank of water through the system to clean it thoroughly.
4. Remove residue on the nozzle (also along the screw threads of the tank) by flushing it with water; brush with a soft brush if necessary.

Note: apply a reasonable amount of Silicone Grease to the seals every once a while.

Such maintenance procedures can help to maximize the life span of your 704 FOAMINI.

Recommendation: use a label or a tag to indicate the chemicals being used and keep it up to date.

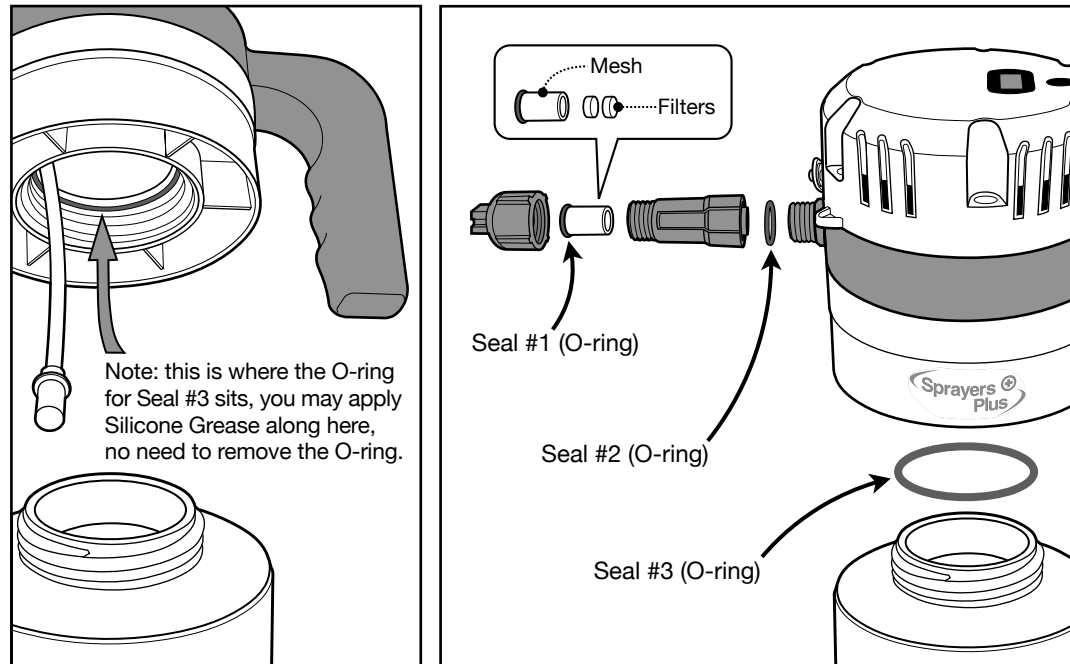
MAINTENANCE CONT'D

GREASING THE SEALS every once a while: there are 3 important seals (O-rings) in your 704 FOAMINI to minimize air leakage, located as shown in the following diagram. To maintain the product's peak performance, apply Silicone Grease (included in the package of this product) to these seals.

It is not necessary to take out the O-rings to apply Silicone Grease - just apply a reasonable amount of the the grease to the groove where the O-ring stays, and wipe to remove the excess grease.

REPLACE THE FIBER FILTERS when the foaming effect decrease drastically: open up the Nozzle Assembly to access the Mesh to replace the Filters (see diagram below).

If you have any questions or concerns, please contact us at info@sprayers-plus.com

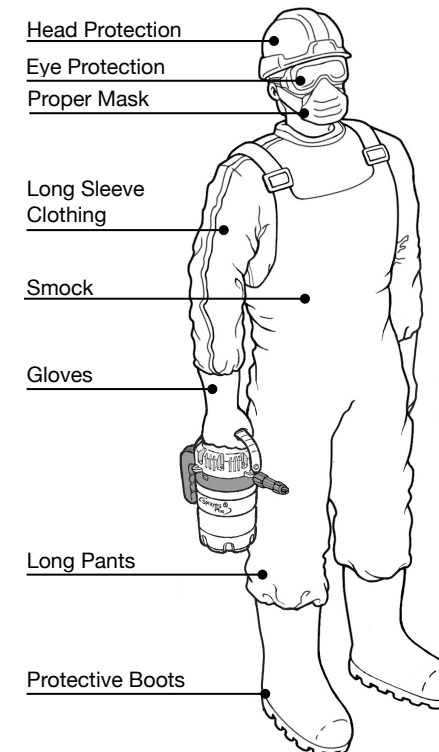


PROTECTION

WHEN SPRAYING CORROSIVE / HAZARDOUS LIQUIDS

704 FOAMINI is not manufactured for industrial usage.
However, there are versions which can handle certain chemicals.

**In case you choose to spray corrosive / hazardous liquids,
WEAR APPROPRIATE PROTECTIVE GEAR!**



Follow Occupational Health and Safety regulation.

Wearing protective clothing and equipment when handling chemicals is obligatory.

⚠ WARNING:

Use the correct dose and volume of chemical according to the product label.

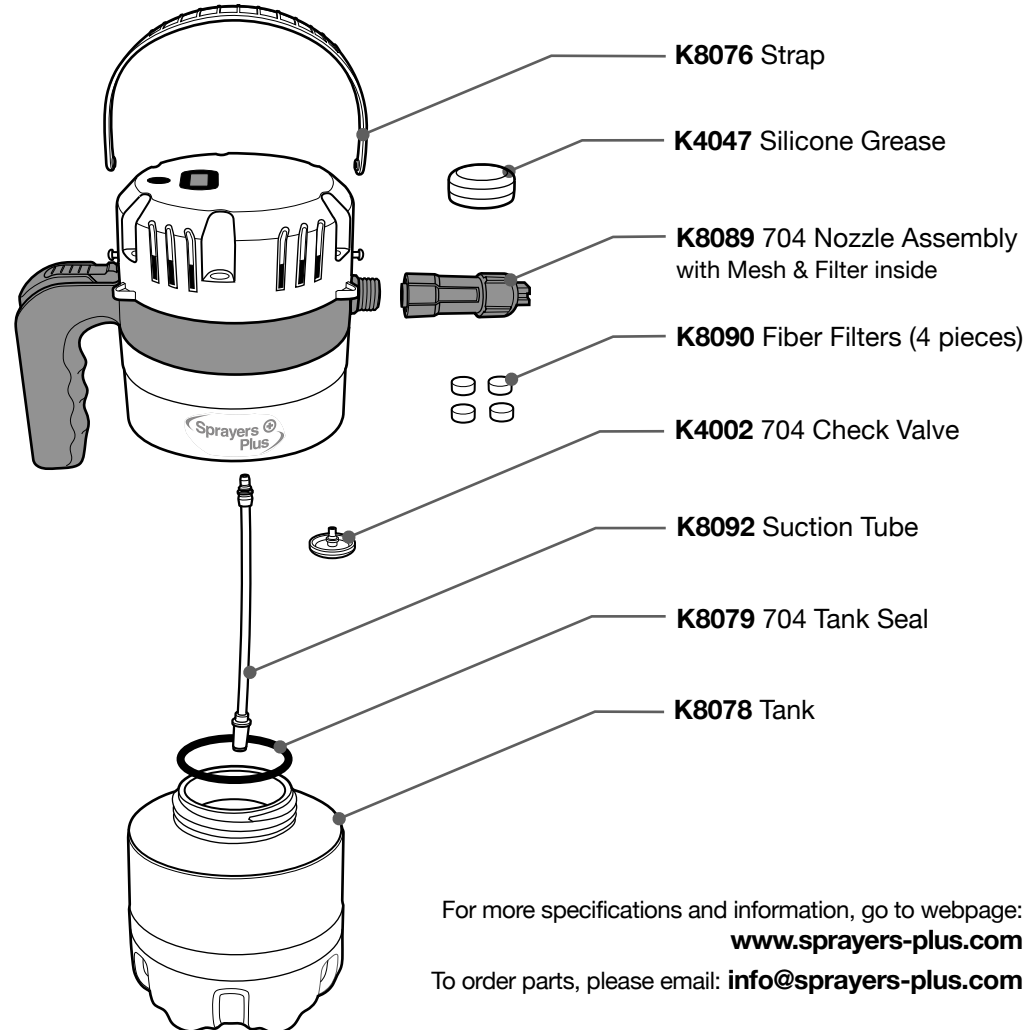
⚠ WARNING:

Do not spray near springs, lakes, rivers and people who are not using PPE.

⚠ WARNING:

In case of an accident, remove the sprayer immediately.

REPLACEMENT PARTS SKU NUMBER



RETURN INSTRUCTIONS

If it is necessary to return the sprayer for repair, always perform the following tasks before returning the sprayer:

- In an approved containment area, flush chemical residue from the pump, tank and hoses.
- Circulate fresh water through the tank and pump.
- Indicate the type of chemicals that have been in the sprayer with a label or tag.
- Include complete description of operation problem, such as how sprayer was used, symptoms of malfunction, how many working hours per day, etc.
- Since the sprayer can contain residues of toxic chemicals, these steps are necessary to protect the people who handle return shipments and to help identify issues and solutions.



WARRANTY INFORMATION

Statement of Limited Warranty

Sprayers Plus shall warrant the equipment described in this manual and shall repair or replace parts and components which, under normal operation and wear, in accordance with technical recommendations, show DEFECTS IN MATERIAL OR WORKMANSHIP, based on the following conditions.

Warranty period

1 (one) year from the date of sale to the original purchaser.

Warranty Registration

Please visit: www.sprayers-plus.com/warranty

Sprayers Plus shall honor this warranty, free of charge, if any part or component shows defect in MATERIAL OR WORKMANSHIP, after final analysis at the factory.

This Warranty shall be null and void in case of:

- Misuse of the equipment against specifications in this manual, overwork or accidents.
- Preventive / remedial maintenance performed by unauthorized people or parties.
- Use of parts and components not supplied by Sprayers Plus.
- Modification of the equipment or any characteristic of the original design.

This Warranty shall exclude

- Parts which show wear and tear due to use: spray nozzle, seals, rechargeable battery, UNLESS THEY SHOW DEFECTS IN WORKMANSHIP, ASSEMBLY OR MATERIAL.
- Damages resulting from accidents.
- Transportation or freight of the equipment, parts, and components in case such warranty is not approved.
- Transportation and travel time of technician.

web: www.sprayers-plus.com



email: info@sprayers-plus.com