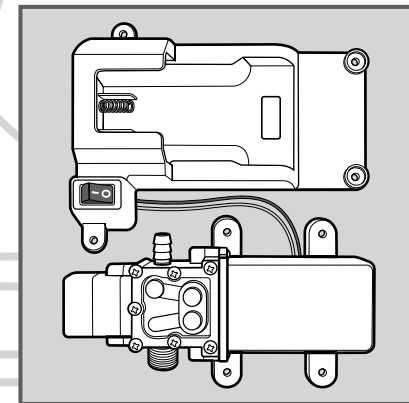


Sprayers Plus

105E_X

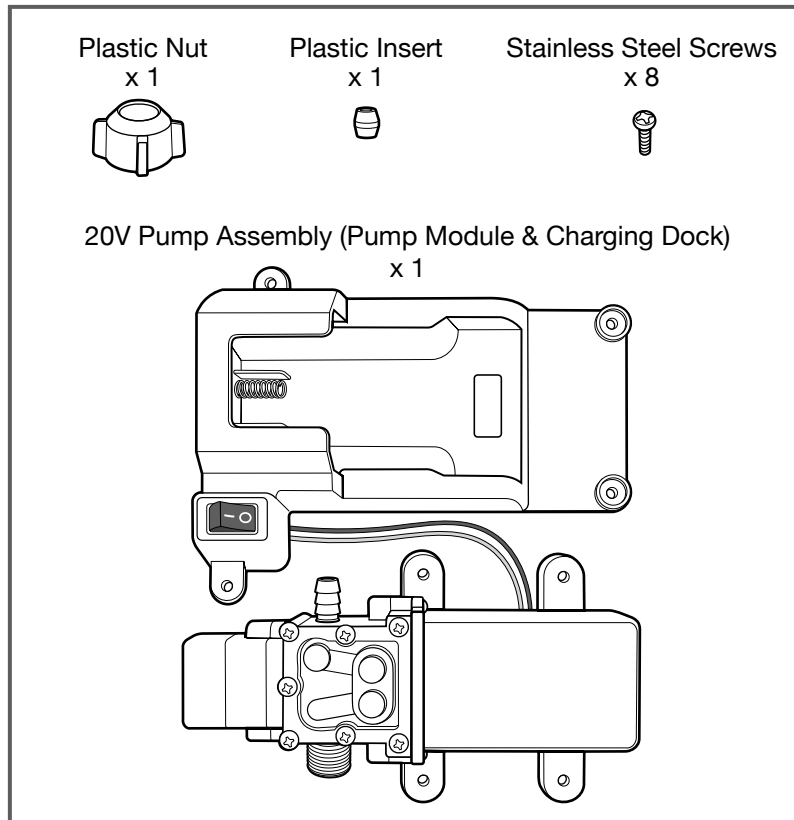
20V PUMP (#K8006)

INSTALLATION INSTRUCTIONS



web: www.sprayers-plus.com
email: info@sprayers-plus.com

PARTS IN THE K8006 PACKAGE



NOTE

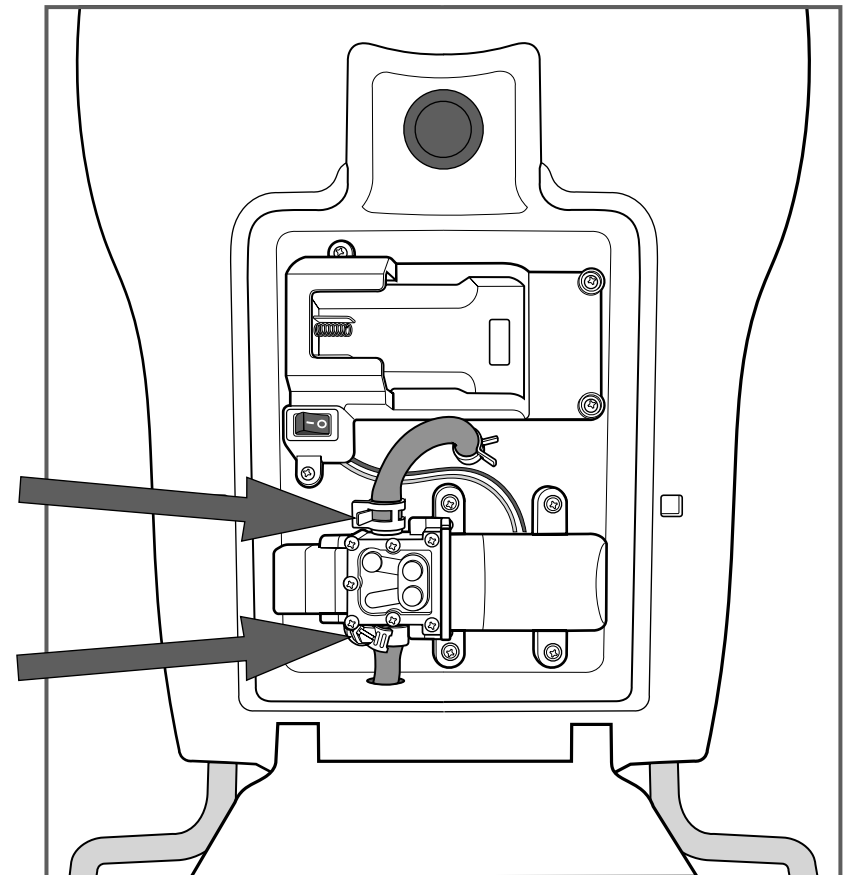
This new 20V pump comes with the 20V charging dock.

The pump connects to the hose through a new method (with a plastic nut and a plastic insert which are included in this package). Please follow the instructions in this booklet to install your new 20V pump and to connect the hose.

Make sure you have a charged SprayersPlus 20V rechargeable battery to power your new pump.

Retiring the old pump retires its charging dock. Please dispose them appropriately.

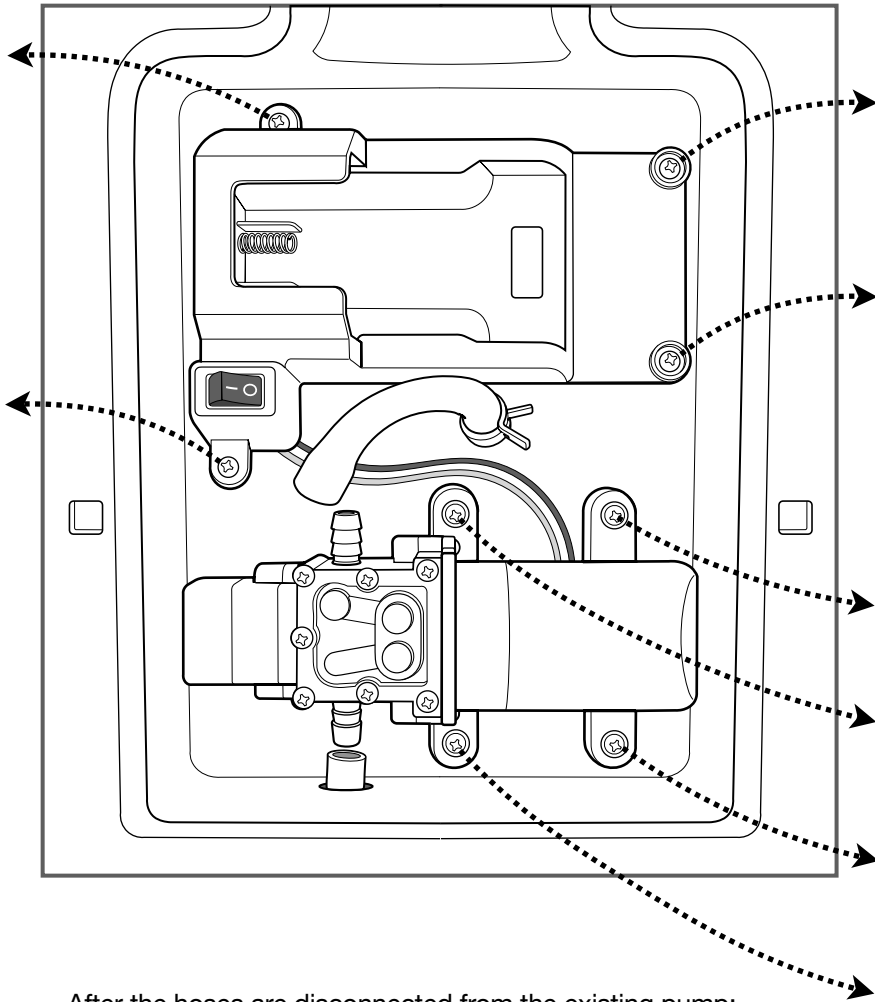
STEP-1: DISCONNECT THE HOSES



- Empty the tank, open the white plastic door at the back (of the 105Ex Sprayer), remove the black plastic cover to access the pump module and the charging dock in the chamber.
- Make sure the unit is OFF, then remove the battery.
- **Loosen the hose clamps and pull the hoses off the old (existing) pump module.**

Note: If it is too difficult to pull the output hose off, you may cut the hose to disconnect it from the pump module.

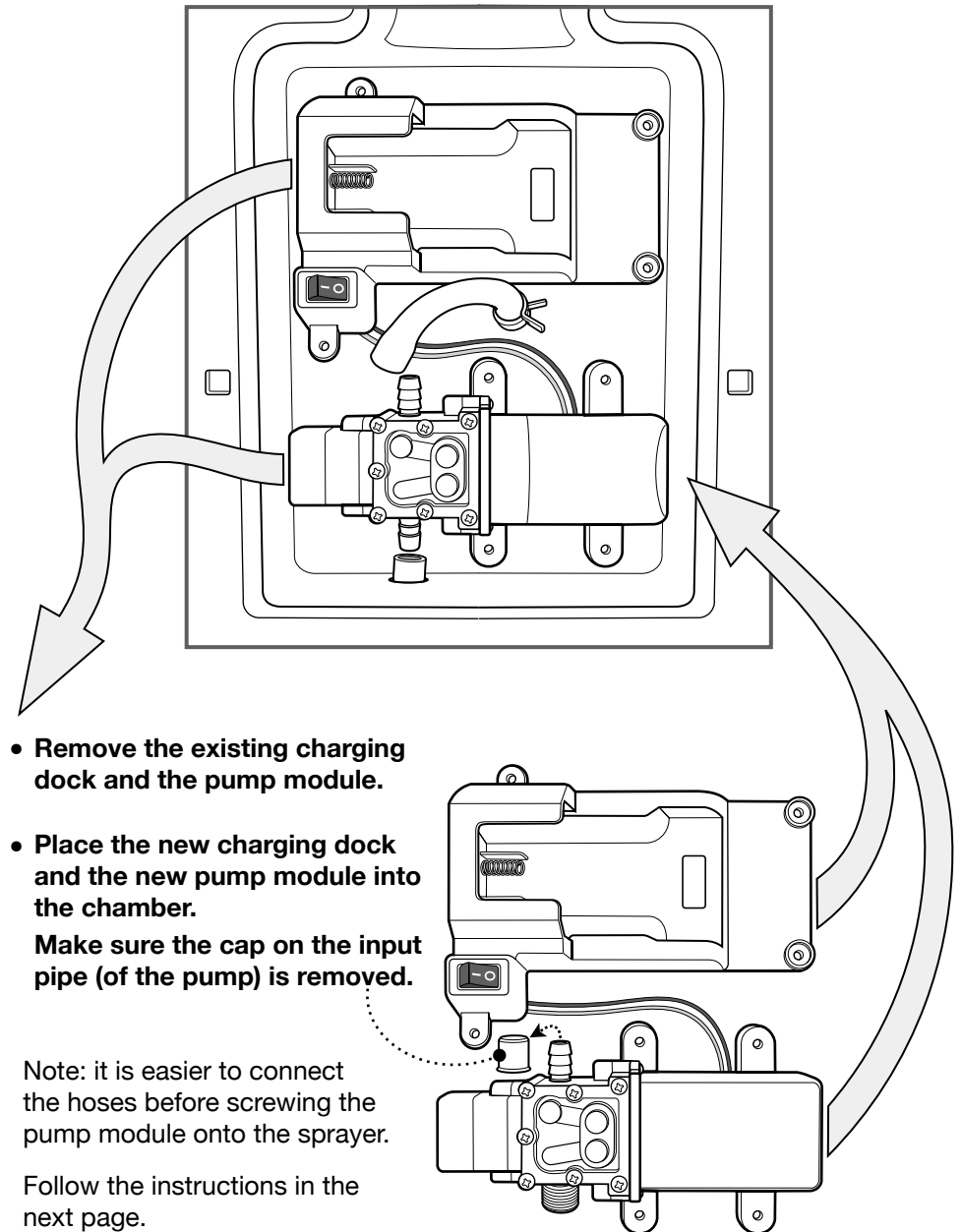
STEP-2: REMOVE DESIGNATED SCREWS



After the hoses are disconnected from the existing pump:

- Undo and remove the 4 screws of the charging dock.
- Undo and remove the 4 screws of the pump module.

STEP-3: SWAP PUMP ASSEMBLY

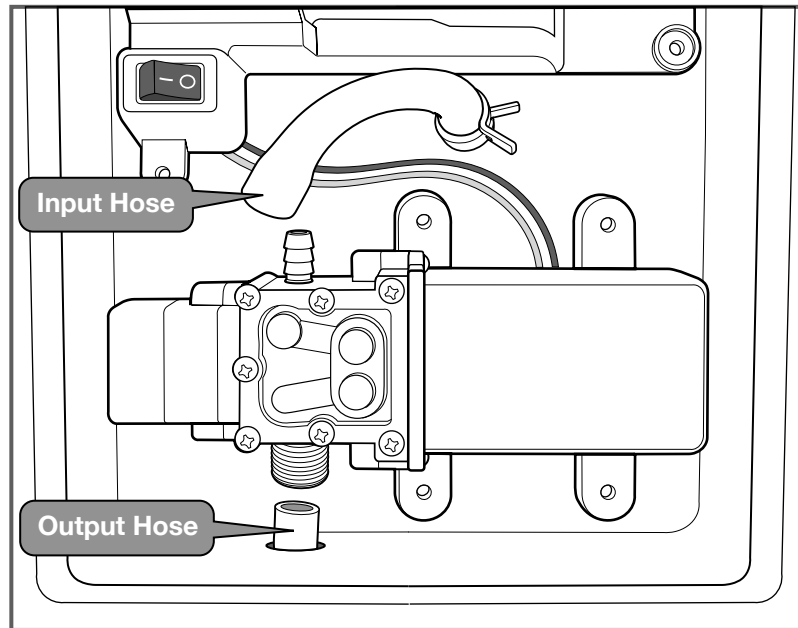


- Remove the existing charging dock and the pump module.
- Place the new charging dock and the new pump module into the chamber.
Make sure the cap on the input pipe (of the pump) is removed.

Note: it is easier to connect the hoses before screwing the pump module onto the sprayer.

Follow the instructions in the next page.

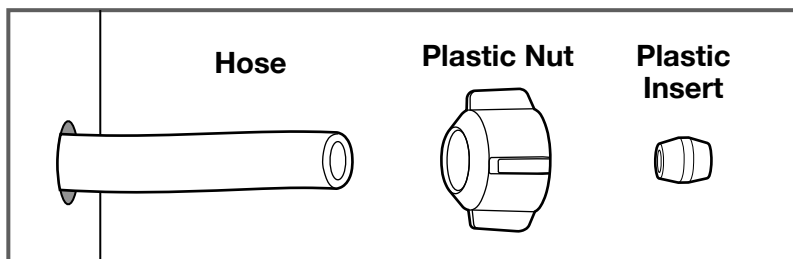
STEP-4: CONNECT OUTPUT HOSE



After the Charging Dock and the Pump Module are placed into the chamber, connect the hoses.

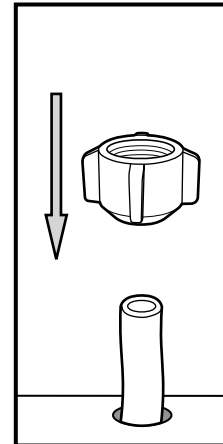
It is easier to connect the Output Hose first:

Get the Plastic Nut and the Plastic Insert ready, feed the hose through the hole on the bottom of the chamber and follow the instructions in the next page.

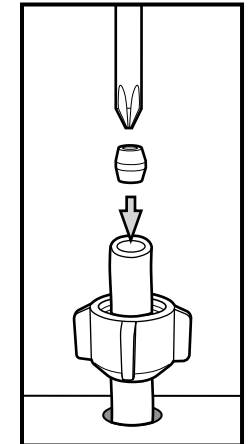
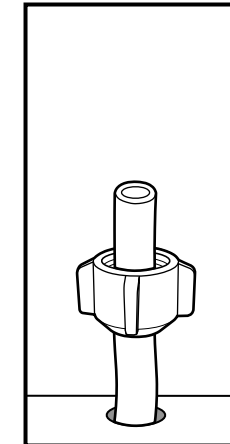


Connecting the Output Hose to the Pump

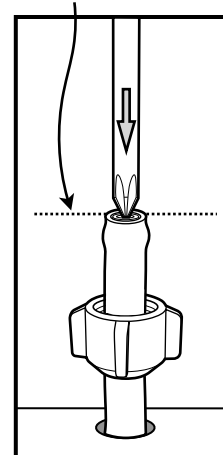
1) Slide the plastic nut through the hose.



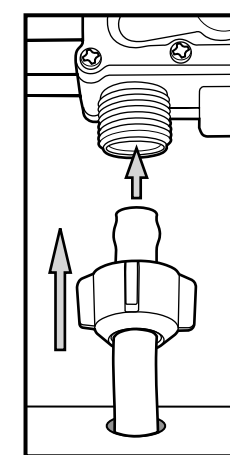
2) Push the plastic insert into the hose.



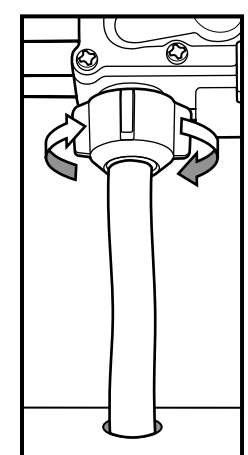
3) The plastic insert need to be pushed in till it is flush to the edge of the hose.



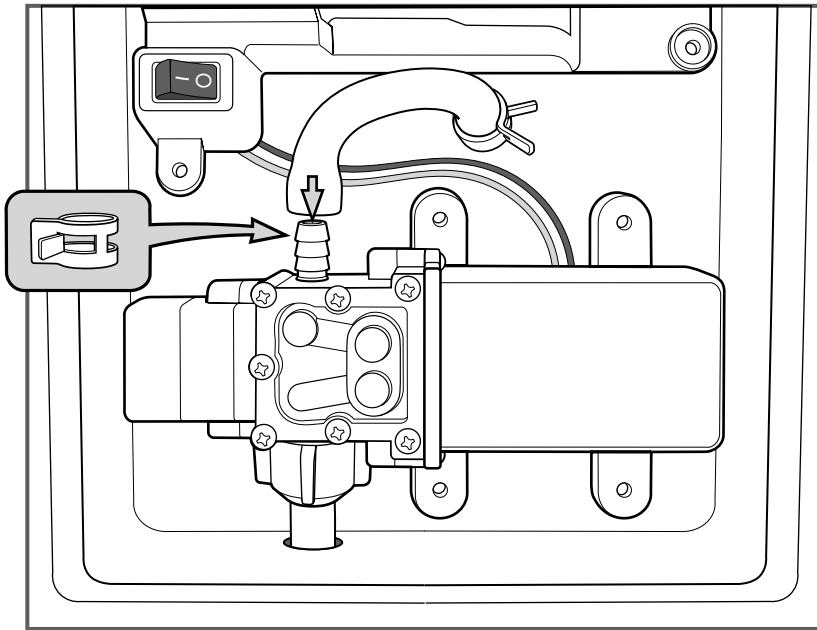
4) Insert the hose into the output pipe of the pump: push until it stops going further.



5) Slide the plastic nut towards the pump and tighten it (onto the output pipe).



STEP-5: CONNECT INPUT HOSE



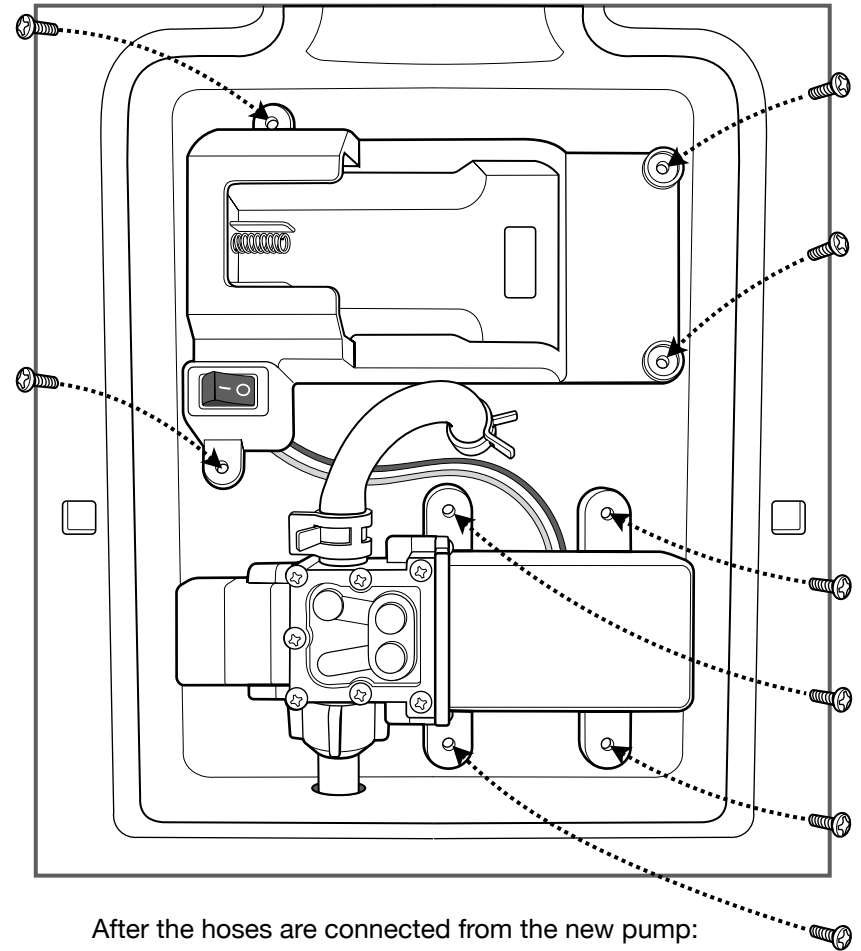
Connect the **Input Hose** to the input pipe of the new Pump Module and secure it using the hose clamp from the previous pump.

NOTE:

Before having everything screwed onto the chamber, you may consider to run a quick test: insert a charged 20V SprayersPlus battery into the charging dock, put some water into the tank, turn on the pump and spray for a little while.

If there is leakage through the connections of the hoses you have just connected, you can tighten the plastic nut, adjust the host clamp, or even undo the hoses and re-connect them until the leakage is fixed.

STEP-6: FASTEN PUMP ASSEMBLY



After the hoses are connected from the new pump:

- **Secure the new charging dock with the 4 screws.**
- **Secure the new pump module with the 4 screws.**
- Insert a charged SprayersPlus 20V battery.
- Put back the black plastic cover over the chamber and close the white plastic door.

You are all set !

WARRANTY INFORMATION

Statement of Limited Warranty

Sprayers Plus shall warrant the equipment described in this manual and shall repair or replace parts and components which, under normal operation and wear, in accordance with technical recommendations, show DEFECTS IN MATERIAL OR WORKMANSHIP, based on the following conditions.

Warranty period

1 (one) year from the date of sale to the original purchaser.

Warranty Registration

Please visit: www.sprayers-plus.com/warranty

Sprayers Plus shall honor this warranty, free of charge, if any part or component shows defect in MATERIAL OR WORKMANSHIP, after final analysis at the factory.

This Warranty shall be null and void in case of:

- Misuse of the equipment against specifications in this manual, overwork or accidents.
- Preventive / remedial maintenance performed by unauthorized people or parties.
- Use of parts and components not supplied by Sprayers Plus.
- Modification of the equipment or any characteristic of the original design.

This Warranty shall exclude

- Parts which show wear and tear due to normal usage,
UNLESS THEY SHOW DEFECTS IN WORKMANSHIP, ASSEMBLY OR MATERIAL.
- Damages resulting from accidents.
- Transportation or freight of the equipment, parts, and components in case such warranty is not approved.
- Transportation and travel time of technician.



web: www.sprayers-plus.com
email: info@sprayers-plus.com